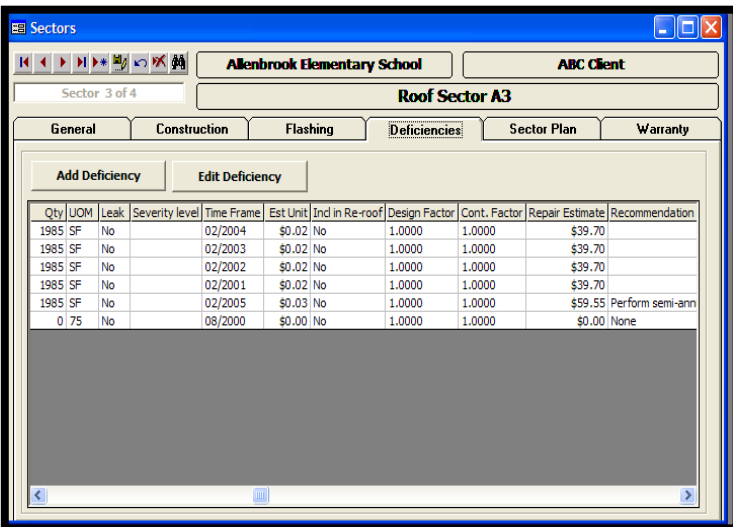
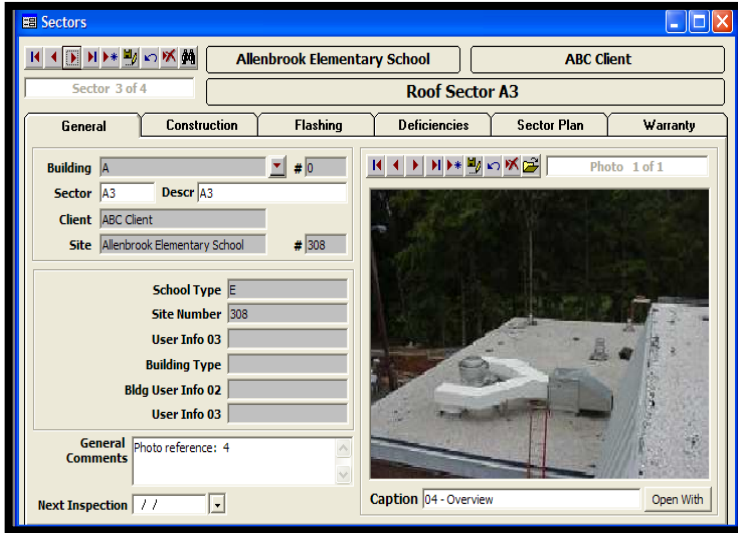


Typical Screenshots of RoofManager™ follow:



Contact CTL Engineering for more information on our customized services to help you make cost effective decisions concerning your roof management systems network.

CTL Engineering has developed a Roof Management System to assist property owners and managers in making consistent and cost-effective decisions. The program is tailored to meet the needs of the individual client with emphasis on defect identification, projected service life, repair/replacement strategies, and maintenance.

This software program is a tool to manage roof assets and related costs over multiple roof areas and buildings. RoofManager™ allows you to clearly define your current needs, project your future needs, and then articulate those needs to your board of trustees, CEO, or other decision makers.

As a decision support tool RoofManager™ provides a systematic and consistent method of allowing you to:

- ◆ Document the existing condition of your roofs
- ◆ Forecast expenditures for repairs and re-roofing
- ◆ Perform master and strategic planning
- ◆ Assign projects to desired fiscal years
- ◆ Generate work orders
- ◆ Track roof leak history
- ◆ Track roof and flashing types
- ◆ Locate the names & addresses of building occupants and customers
- ◆ Identify maintenance personnel, contractors, & work performed
- ◆ Incorporate site plans and digital photos into your software database

This program allows you to analyze or present your information using a wide variety of built-in reports, or you can customize a report to meet a specific need using Microsoft Access. RoofManager™ utilizes Microsoft Access for the relational database of your roofing inventory. This allows you to create your own custom queries and reports using Microsoft Access; mail-merge your data with Microsoft Word; export your data and analyze it with Microsoft Excel; and easily export the data to a variety of other formats.