

Pavement Management

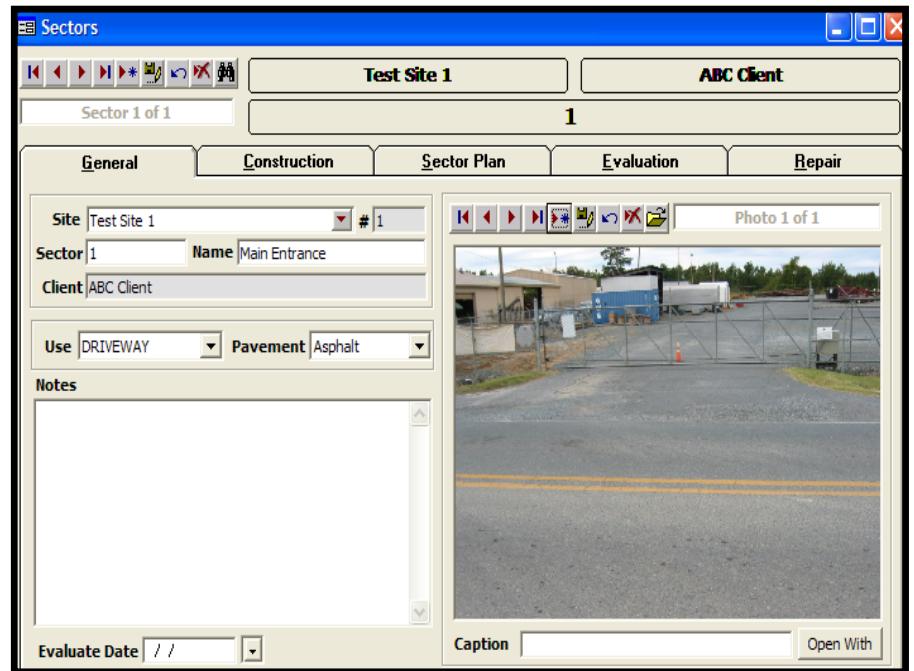
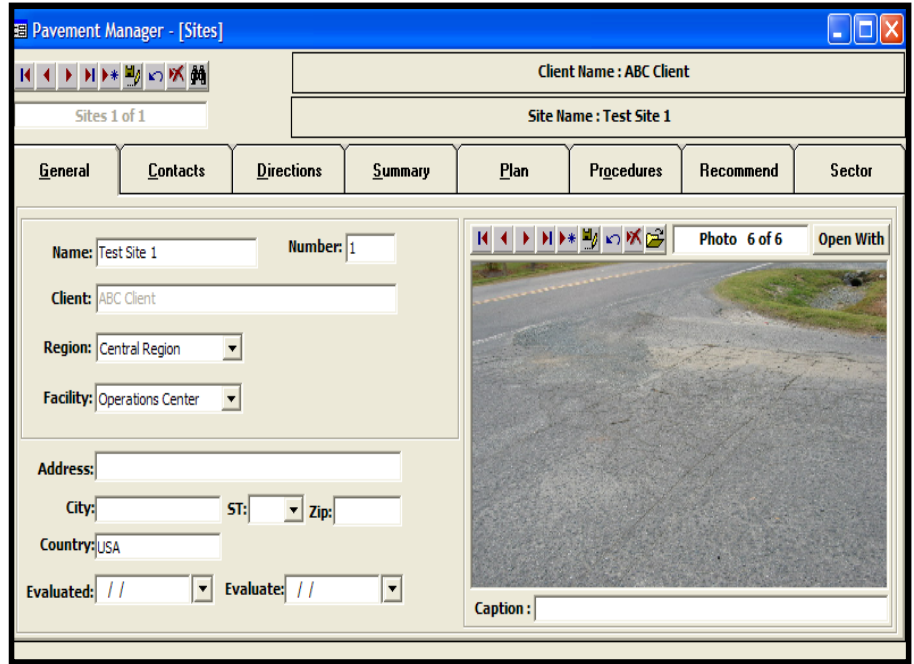
CTL Engineering provides a Pavement Management System to assist facility and property managers and maintenance personnel in making consistent and cost-effective decisions related to pavement maintenance and rehabilitation. This computerized system is simple to use and can be tailored to meet the needs of the individual client, and is flexible enough to accommodate small and large-scale pavement systems.

The program assists in determining the type and timing of maintenance actions for different pavement sectors. This helps to achieve the best value possible for the available funds. Pavement Manager™ was developed by CTL Engineering and includes the following inter-related components:

- ◆ **Inventory**
- ◆ **Condition Assessment**
- ◆ **Maintenance & Rehabilitation Strategies**
- ◆ **Prioritization**
- ◆ **Deterioration Rates**
- ◆ **Network Needs & Long Range Goals**
- ◆ **Budgeting (5 year forecasts)**

In the past few years, the concept of pavement and facility management has become a major focus of many federally funded agencies through the issuance of House Bill GASB 34. Pavement Manager™ can assist in meeting these requirements, while allowing the property manager to maintain the pavements at the highest service level and the lowest possible cost. It will allow property managers to defend budget requests accurately with credible forecasts of the consequences of a budget reduction.

Typical screenshots of Pavement Manager™ follow:



Contact CTL Engineering for more information on our customized services to help you make cost effective decisions concerning your facility and pavement network.